



(209) 646-9755

customerservice@allinsupplyco.com

3157 Humphrey Court, Turlock, CA 95380

OCTOBER - NOVEMBER - DECEMBER Q4 2024

SKU:
115-DCL182

Rechargeable LED Task Light

Lumens: 1000
Voltage: 4 V
Includes: (1) DCL182 Rechargeable LED Task Light; (1) USB charging cable



V30 Nemesis™ Safety Glasses

SKU:
412-25688

Test & Approvals: ANSI/ISEA Z87.1+
Lens Tint: Smoke Mirror
Lens Material: Polycarbonate
Lens Coating/Shade: Mirror
Frame Color: Black
Temple Color: Black
Resistance: 99.9% UVA/UVB/UVC



SKU:
101-100F

Winter Liner

Color: Blue
Material: Stretch Quilted
Lining: Red Fleece
Fastening Method: Chin Strap
Type: Light Duty
Climate Range: Mild to Moderate Cold



High Performance V2100 System Enamel Spray Paint

SKU:
647-V2178838

Capacity Vol.: 15 oz
Color: Flat Black
Application Temp. Range: 50° F - 100° F
Dry Heat Resistance: 212° F



ANCHOR



Adjustable Wrench

Test & Approvals: Meets or Exceeds Federal and ANSI Specifications

Head Angle: 15°

Head Width: Varies

Head Thickness: Tapered

Handle Type: I-Beam

Material: Drop-Forged Alloy Steel

Finish: Chrome Plated

SKU	Opening Size	Overall Length
103-01-010	1-5/16 in	10 in
103-01-012	1-1/2 in	12 in
103-01-015	1-3/4 in	15 in
103-01-018	2-1/16 in	18 in
103-01-024	2-7/16 in	24 in



Bastard File

Tooth Pattern: Flat - Double Cut

Tool Shape: Taper to Point

Style: American

Applicable Materials: Wood; Most Metals

SKU	Length
100-14HRBF	14 in



Bolt Cutters

Test & Approvals: Meets or Exceeds Federal and ANSI Specifications

Cut Type: Center Cut

Jaw Material: Forged Alloy Steel

Handle Material: Rubber; Steel

SKU	Cutting Cap.	Hardness	Overall Length
103-39-014	3/16 in	42 HRC	14 in
103-39-018	5/16 in	42 HRC	18 in
103-39-024	3/8 in	42 HRC	24 in
103-39-036	7/16 in	42 HRC	36 in



Tip Drill Set

Dia.: 0.0635 in; 0.055 in; 0.0465 in; 0.0420 in; 0.0400 in; 0.0380 in; 0.0360 in; 0.0330 in; 0.0310 in; 0.0280 in; 0.0250 in; 0.0225 in

Length: 4.10 in

Size Group: 52; 54; 56; 58; 60; 62; 64; 66; 68; 70; 72; 74

SKU	Material
100-TD-3	Carbon Steel Drill; Aluminum Handle



Drop Forged C-Clamp

Test & Approvals: Meets or exceeds Federal Standards

Handle Type: Sliding Pin

Handle Material: Steel

SKU	Opening Size	Overall Length	Throat Depth	Pressure	Spindle Dia
102-404C	3-1/4 in	4 in	3-1/4 in	6,200 lb	3/4 in
102-406C	6-1/16 in	6 in	4-1/8 in	6,900 lb	3/4 in
102-408C	8-1/4 in	8 in	5 in	6,600 lb	3/4 in
102-410C	12-1/4 in	10 in	6 in	8,000 lb	3/4 in
102-412C	12-1/4 in	12 in	6-5/16 in	9,300 lb	7/8 in



Adjustable Pipe Wrench

Test & Approvals: Meets or Exceeds Federal and ANSI Specifications

Jaw Material: Drop Forged Steel

Handle Type: I-Beam

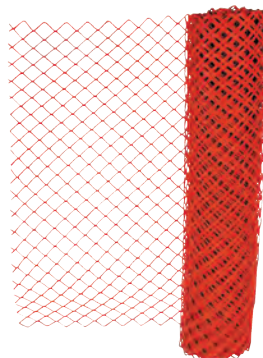
SKU	Head Angle	Pipe Cap.	Overall Length	Material
103-01-312	15°	2 in	12 in	Malleable Alloy
103-01-318	15°	2-1/2 in	18 in	Malleable Alloy
103-01-324	15°	3 in	24 in	Malleable Alloy
103-01-336	15°	5 in	36 in	Cast Iron

ANCHOR



25 Person First Aid Kit

Width: 7 in
Height: 3 in



Safety Fence



Multi-Purpose Scrubbing Wipes

SKU	Length
101-25-3-FAKP	10 in
101-25-9-FAKP	10 in

SKU	Height	Length
101-FEN1009	4 ft	100 ft
101-ML-500	4 ft	100 ft

SKU	Quantity	W x L per sheet
103-360726	72 Sheets/Roll	10 in x 12 in



High Heat Wool-Lined Kevlar® Gloves

Temp Range: 650° F - 800° F



Economy Barrier Tape

Width: 3 in
Length: 1000 ft
Material: Polyethylene



Oil-Only Sorbent Pad

Absorption: 20.5 gal

SKU	Size Group	Cuff Style
101-K-37WL	Large	Gauntlet

SKU	Depicted Text	Color
101-R10003	Danger	Red
101-Y10003	Caution	Yellow

SKU	Length	Width
103-AB-BP0100	17 in	15 in



Bib Apron

Material: Vinyl

SKU	Width	Length
101-AG-100	35 in	45 in



MIG Contact Tip

Used With: Bernard™ BTB; S-Gun™; Clean Air™; Dura-Flux™
Material: Copper

SKU	Tip I.D.	Wire Size	Type
900-TT-035	0.035 in	0.035 in	Tapered Centerfire™
900-TT-045	0.045 in	0.045 in	Tapered Centerfire™
900-TT-052	0.52 in	0.52 in	Tapered Centerfire™
900-TT-062	0.62 in	0.62 in	Tapered Centerfire™
900-T-035	0.035 in	0.035 in	Centerfire™ T Series
900-T-045	0.045 in	0.045 in	Centerfire™ T Series
900-T-052	0.052 in	0.052 in	Centerfire™ T Series
900-T-062	1/16 in	1/16 in	Centerfire™ T Series



Centerfire™ Style MIG Gun Nozzle

SKU	Dia.	Nozzle Style	Bore Size
Brass			
900-NST-3818B	Slim	1/8 in Recess	3/8 in
900-NS-1218B	Slim	1/8 in Recess	1/2 in
900-N-5818B	Standard	1/8 in Recess	5/8 in
Copper			
900-NS-1218C	Slim	1/8 in Recess	1/2 in
900-NS-5818C	Slim	1/8 in Recess	5/8 in
900-N-5814C	Standard	1/4 in Recess	5/8 in
900-N-5818C	Standard	1/8 in Recess	5/8 in
900-N-5800C	Standard	Flush Tip	5/8 in



MIG Gun Nozzle Retainer and Diffuser

Material: Brass

SKU	Used With	Size Group
900-D-1	Large Centerfire™ Gas Diffusers and Nozzles	Large
900-DS-1	Small Centerfire™ Gas Diffusers and Nozzles	Small



ER308L MIG Welding Wire

Tensile Strength: 84 kpsi
Material: Stainless Steel

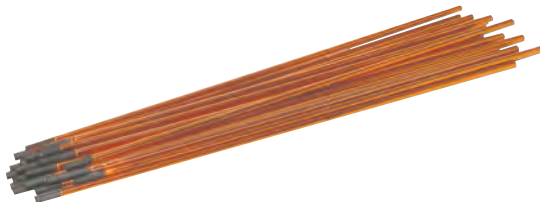
SKU	Dia.	Wt.
900-308L030X10	0.030 in	10 lb
900-308L035X10	0.035 in	10 lb
900-308L035X30	0.035 in	30 lb



Mild Steel Electrodes

Test & Approvals: AWS A5.1
Material: Carbon Steel
Length: 14 in
Type: E7018

SKU	Quantity
900-7018-18X5	5LB/SO
900-7018-332X5	5LB/SO
900-7018-18X50	50LB/SO
900-7018-332X50	50LB/SO



DC Copperclad Gouging Electrodes

Length: 12 in
Model Type: Pointed
Coating: Copper

SKU	Amps	Dia.
900-22-033-003X	200 A - 250 A	3/16 in
900-22-043-003X	300 A - 400 A	1/4 in
900-22-053-003X	350 A - 450 A	5/16 in
900-22-063-003X	450 A - 600 A	3/8 in

Electrode Ovens

Voltage: 110 V
Digital Thermometer: No
Includes: Analog Thermostat



SKU	Capacity Wt.	Temp. Range	Watts
900-BW-ELECTRODE-OVEN-ET	10 lb	175° F - 300° F	80 W
900-20LB-ELECTRODE-OVEN	20 lb	85° F - 300° F	220 V
900-50LB-ELECTRODE-OVEN	50 lb	175° F - 300° F	220 V



Heavy Duty Pipe Stands

Height: 28 in - 49 in
Material: All Steel

SKU	Load Cap.	Pipe Diam.
900-PIPE-STAND-HDJ	2500 lb	1/2 in - 18 in



Hi-Jack Style Pipe Stands

Height: 28 in - 49 in
Material: All Steel

SKU	Load Cap.	Pipe Diam.
900-PIPE-STAND-HJ	2500 lb	1/2 in - 18 in



Electrode Holders - High Tong Type

Test & Approvals: Partial IEC 60974-11
Body Material: Brass

SKU	Amps	Electrode Cap.	Cable Cap.	Length
900-A-316	250 A	4 mm	1/0	9.25 in
900-A-532	200 A	3.2 mm	#3	8.46 in
900-A-732	300 A	5 mm	1/0	10.04 in



Lever Designed Electrode Holders

Test & Approvals: IEC 60974-11
Body Material: Brass

SKU	Amps	Electrode Cap.	Cable Cap.	Length
900-AF-2	200 A	3.2 mm	#3	8.54 in
900-AF-25	250 A	5 mm	1/0	8.54 in
900-AF-3	300 A	5 mm	2/0	10.31 in



Welding Cables

Temp Range: -50° C (-58° F) - 105° C (221° F)
Jacket Material: EPDM
Number of Conductors: 1
Insulation Thickness: 0.08 in
Voltage: 600 V
Insulation: EPDM
Conductor Material: Stranded Copper



Grade R Single-Line Welding Hoses

Gas Type: Oxygen
Grade: R
Pressure: 200 psi



2% Thoriated Tungsten Electrodes

Material: 2% Thoriated

SKU	Cable/Wire Description
911-1/0-250	1/0 AWG x 250 ft
911-2/0-250	2/0 AWG x 250 ft
911-1/0-500	1/0 AWG x 500 ft
911-2/0-500	2/0 AWG x 500 ft

SKU	Hose I.D.	Length
907-3/8X1-GRN	3/8 in	700 ft
907-1/4X1-GRN-RL	1/4 in	800 ft

SKU	Dia.	Length
900-1/16-7GT2	1/16 in	7 in
900-3/32-7GT2	3/32 in	7 in
900-1/8-7GT2	1/8 in	7 in



300W Non UL Power Cables

Temp Range: -40° C - 90° C
Jacket Material: CPE
Insulation Thickness: 0.06 in
Voltage: 600 V
Insulation: EPDM
Conductor Material: Stranded Copper



Grade T Twin-Line Welding Hoses

Gas Type: Fuel Gases; Oxygen
Grade: T
Pressure: 200 psi



E3 Tungsten Electrodes

SKU	Cable/Wire Description	Amps	Number of Conductors
911-6/3X250	6 AWG x 250 ft	55	3
911-6/4X250	6 AWG x 250 ft	45	4
911-8/3X250	8 AWG x 250 ft	40	3
911-8/4X250	8 AWG x 250 ft	35	4

SKU	Hose I.D.	Length
907-TR3/8-TWIN-RL	3/8 in	700 ft
907-TR1/4-TWIN-RL	1/4 in	800 ft

SKU	Dia.	Length
900-1167GE3	1/16 in	7 in
900-3327GE3	3/32 in	7 in
900-187GE3	1/8 in	7 in



**CONSTRUCTION
INDUSTRIAL
JANITORIAL
WELDING
ENERGY
SAFETY**



GREAT VALUE, PERFORMANCE & RELIABILITY AT A GREAT PRICE



3M™ Cubitron™ 3 Cut and Grind Wheel

Thickness: 5/32 in | Arbor Size: 5/8 in
Grit: 36+ | Tool Shape: T27

SKU	Dia.	Speed
405-638060-90016	4-1/2 in	13300 RPM
405-638060-90017	5 in	12250 RPM
405-638060-90020	6 in	10200 RPM
405-638060-90022	7 in	8500 RPM



3M™ Cubitron™ 3 Cut-Off Wheel

SKU	Dia.	Arbor Size	Grit
Tool Shape: T1			
Speed: 21000 RPM			
405-638060-90035	4 in	3/8 in	36+
Speed: 13300 RPM			
405-638060-90051	4-1/2 in	7/8 in	60+
Tool Shape: T27			
Speed: 10200 RPM			
405-638060-90048	6 in	7/8 in	60+
405-638060-90038	6 in	7/8 in	60+



3M™ Cubitron™ 3 Depressed Center Grinding Wheel

Thickness: 1/4 in
Grit: 36+
Tool Shape: T27

SKU	Dia.	Speed
405-638060-90003	4-1/2 in	13300 RPM
405-638060-90004	5 in	12250 RPM
405-638060-90005	6 in	10200 RPM
405-638060-90009	7 in	8500 RPM



3M™ Fibre Disc 782c

Abrasive Material: Precision Shaped Ceramic
Applicable Materials: Aluminum; High Nickel Alloy; Stainless Steel; Titanium; Titanium/Zirconium; Zirconium

SKU	Dia.	Arbor Diam.	Grit	Speed	Mounting
405-076308-89590	5 in	7/8 in	36+	12000 RPM	Center Hole
405-076308-89599	5 in	7/8 in	60+	12000 RPM	Center Hole
405-076308-89591	7 in	7/8 in	36+	8600 RPM	Center Hole
405-076308-89595	7 in	4-1/2 in	36+	13300 RPM	TN Quick Change



3M™ Flap Disc 769F

Abrasive Material: Precision Shaped Ceramic

SKU	Dia.	Grit	Speed
405-638060-05903	4-1/2 in	40+	13300 RPM
405-638060-05906	4-1/2 in	40+	13300 RPM
405-638060-05904	4-1/2 in	60+	13300 RPM
405-038060-05905	4-1/2 in	80+	13300 RPM
405-638060-88510	4-1/2 in	80+	13300 RPM
405-638060-05925	4-1/2 in	120+	13300 RPM
405-638060-05945	7 in	80+	8600 RPM
405-638060-05911	7 in	80+	8600 RPM



3M™ PELTOR™ Welding Earmuff

SKU	Noise Reduction Rate (NRR)
247-H505B	22 dB



3M™ Silver Cut-Off Wheel

Abrasive Material: Precision Shaped Ceramic

SKU	Dia.	Grit	Speed
405-051125-87457	3 in	60	25465 RPM
405-051125-87657	4 in	36	19100 RPM
405-051125-87659	4.5 in	36	13300 RPM
405-051125-87465	4.5 in	36	13300 RPM
405-051125-87466	4.5 in	36	13300 RPM
405-051125-87464	4.5 in	60	13300 RPM
405-051125-87467	5 in	36	12250 RPM
405-051125-87469	6 in	60	10200 rpm



3M™ Hi-Strength Spray Adhesive 90

Adhesive Tensile Shear: 600 psi
Working Time: 1 min to 10 min

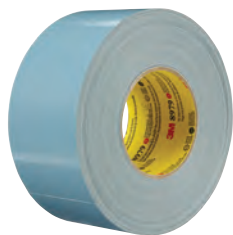
SKU	Capacity vol.
405-021200-30023	17.6 oz



3M™ Super 77™ Multipurpose Spray Adhesive

Tensile Strength: 300 psi
Chemical Compound: Synthetic Elastomer
Working Time: 15 sec to 15 min

SKU	Capacity vol.
405-021200-21210	16.75 oz



3M™ Performance Plus Duct Tape

Width: 48 mm
Length: 54.8 m
Thickness: 12.1 mil
Temp. Range: 200° F
Tensile Strength: 36 lb-in
Wt.: 1.88 lb



3M™ Secure Click™ Half Facepiece Reusable Respirator with Speaking Diaphragm

Body Material: Silicone/Nylon
Resistance: Gases; Vapors
Includes: Speaking Diaphragm



3M™ Speedglas™ Welding Helmet 9100

Window Size: 2.8 in x 4.2 in
Material: High-Density Polyethylene
Suspension: Ratchet

SKU	Lens Coating/Shade
711-06-0100-30ISW	5; 8 to 13; Shade 3 Light State

SKU	Series
405-021200-56468	8979



3M™ Neoprene High Performance Rubber and Gasket Adhesive

Working Time: 12 min

SKU	Capacity vol.	Color
405-021200-19868	5 oz	Yellow



3M™ Secure Click™ Full Facepiece Reusable Respirator

Body Material: Silicone
Resistance: Particulates; Gases; Vapors; Airborne Contaminants

SKU	Size Group
142-FF-801	Small
142-FF-802	Medium
142-FF-803	Large

SKU	Size Group
142-HF-801SD	Small
142-HF-802SD	Medium
142-HF-803SD	Large



3M™ Secure Click™ Particulate Filter P100 with Nuisance Level Acid Gas Relief

Filtration Grade: P100
For Model: Secure Click™ Half Facepiece Reusable Respirators HF-800 Series

SKU
142-D3096
142-D80921
142-D3097
142-D80926
142-D3091
142-D80923



3M™ SecureFit™ Protective Eyewear

Lens Material: Polycarbonate

SKU	Lens Tint	Lens Coating/Shade
247-SF401AF	Clear	Anti-Scratch; Scotchgard™ Anti-Fog
247-SF402AF	Gray	Anti-Scratch; Scotchgard™ Anti-Fog
247-SF410AS	Mirror I/O	Anti-Scratch



3M™ Speedglas™ Heavy-Duty Welding Helmet G5-01

Window Size: 2.8 in x 4.3 in
Material: Polyphthalamide
Suspension: Adjustable

SKU	Lens Coating/Shade
711-46-1101-30IVC	Shade 5; 8 to 14
711-46-1101-30I	Shade 5; 8 to 14



3M™ Particulate Welding Respirator

SKU	Resistance	Suspension
142-8212	Gas/Vapor Particulates; Non-Oil Aerosol; Welding Fumes	Adjustable Buckle Straps
142-8214	Nuisance-Level Organic Vapors/Ozone; Welding Fumes	Adjustable Buckle Straps
142-8515	Gas/Vapor Particulates; Non-Oil Aerosol; Welding Fumes	Stapled; Braided Head Band Straps



3M™ DBI-SALA® Nano-Lok™ Personal Twin-Leg Self Retracting Lifeline, Web Aluminum Snap Hook

Load Capacity: 420 lb
Bottom Connector: Rebar Snap Hook

SKU	Top Connector
098-3100548	Single Pin Connector



3M™ DBI-SALA® Smart Lock Self-Retracting Lifeline

Load Capacity: 420 lb

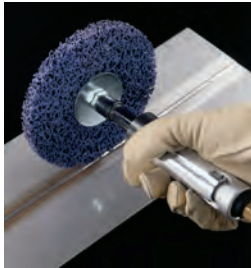
SKU	Length
098-3503874	30 ft



3M™ DBI-SALA® Suspension Trauma Safety Straps

Length: 6-1/4 in - 9 in
Strap Material: Nylon

SKU	Load Cap	Color
098-9501403	310 lb	Black



Scotch-Brite™ Clean and Strip XT Pro Disc

Roughness Grade: Extra Coarse
Abrasive Material: Silicon Carbide
Arbor Diam: 5/8 in-11

SKU	Speed	Dia.
405-638060-05574	13300 rpm	4-1/2 in



Scotch-Brite™ Clean and Strip XT Pro TN Quick Change Disc

Roughness Grade: Extra Coarse

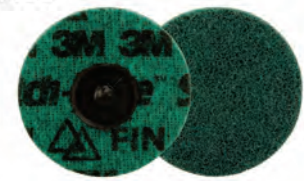
SKU	Speed	Dia.	Abrasive Material
405-638060-05588	13300 RPM	4-1/2 in	Silicon Carbide
405-638060-21050	13300 RPM	4-1/2 in	Aluminum Oxide
405-638060-29936	12000 RPM	5 in	Aluminum Oxide
405-638060-29900	13300 RPM	4.5 in	Silicon Carbide
405-638060-05586	13300 RPM	4.5 in	Silicon Carbide
405-638060-21055	8600 RPM	7 in	Aluminum Oxide



Scotch-Brite™ Precision Surface Conditioning TN Quick Change Disc

Abrasive Material: Precision Shaped Ceramic
Dia.: 4-1/2 in

SKU	Speed	Roughness Grade
405-638060-89373	13300 RPM	Very Fine
405-638060-89372	13300 RPM	Fine
405-638060-89371	13300 RPM	Medium
405-638060-89370	13300 RPM	Coarse
405-638060-89369	13300 RPM	Extra Coarse



Scotch-Brite™ Roloc™ Precision Surface Conditioning Disc

Abrasive Material: Precision Shaped Ceramic
Dia.: 3 in
Speed: 20000 RPM

SKU	Roughness Grade
405-638060-89293	Very Fine
405-638060-89292	Fine
405-638060-89291	Medium
405-638060-89290	Coarse
405-638060-89289	Extra Coarse



Scotch® Box Sealing Tape 371

Thickness: 1.8 mil
Tensile Strength: 22.0 lb/in
Elongation: 160%
Material: Polypropylene Film

SKU	Width	Length
405-021200-13679	48 mm	50 m
405-021200-13681	48 mm	914 m
405-021200-18197	72 mm	50 m



Scotch® High Tack Box Sealing Tape 311+

Thickness: 0.28 mm
Color: Clear
Tensile Strength: 40 lb/in
Elongation: 125%
Material: Pressure Sensitive Acrylic

SKU	Width	Length
405-076308-86493	48 mm	100 m

AlphaTec®



Chemical-Resistant Butyl Gloves

Coating: Butyl Polymer
Style: 38-001
Cuff Style: Extended; Wide

SKU	Size Group
012-38001PP-070	7
012-38001PP-080	8
012-38001PP-090	9
012-38001PP-100	10
012-38001PP-110	11



Chemical-Resistant Gloves

Cuff Style: Gauntlet
Material: Neoprene/Nitrile

SKU	Size Group
012-53-001-7	7
012-53-001-8	8
012-53-001-9	9
012-53-001-10	10
012-53-001-11	11



Nitrile Coated Chemical Protectives Gloves

Lining: Acrylic
Cuff Style: Gauntlet
Color: Green

SKU	Size Group
012-58-201-080	8
012-58-201-090	9
012-58-201-100	10

Ansell



AlphaTec® Cut and Chemical Resistant Gloves

Size Group: 10

SKU	Material	Cuff Style
012-58-735-10	Nitrile	14 in Extended

HyFlex®



Polyurethane Palm Coated Gloves

Cuff Style: Knit-Wrist
Lining: Dyneema® Diamond Technology; Nylon; Spandex
Material: 18 ga Knit

SKU	Size Group
012-11-518-8	8
012-11-518-9	9
012-11-518-10	10



Cut Resistance Gloves

Material: Hippe
Cuff Style: Knitwrist

SKU	Size Group
012-11543060	Size 6
012-11543070	Size 7
012-11543080	Size 8
012-11543090	Size 9
012-11543100	Size 10
012-11543110	Size 11

HyFlex®



Cut Resistant Gloves

Material: Nitrile Coating Nylon Liner
Cuff Style: Knitwrist

SKU	Size Group
012-11-561-10	10
012-11-561-11	11
012-11-561-12	12



Cylinder Wall Brackets

Dia: 7 in - 9-1/2 in

SKU	Width	Depth
021-WB200	22 in	7 in
021-WB200C	22 in	7 in



Liquid Cylinder Carts

Width: 28 in
No. of Cylinders: 1

SKU	Cylinder Diam	Height
021-86-3-ELB	Up to 21 in	43 in
021-87U-4S	21 in	46 in



Site-Vault™ Heavy-Duty Chests

Width: 48 in
 Depth: 30 in
 Height: 33-3/8 in
 Material: Steel
 Wt.: 190 lb

SKU	Capacity Vol.
217-2-656990	24.3 ft³



Site-Vault™ Piano Boxes

Width: 60 in
 Depth: 31 in
 Height: 51 in
 Material: 16 ga Steel
 Wt.: 354 lb

SKU	Capacity Vol.
217-2-682990-01	48.9 ft³



Tradesman Steel Chests

Width: 48 in
 Depth: 24 in
 Height: 27.5 in
 Material: Steel

SKU
217-CJB637990



1/4 in and 3/8 in Drive 6-Pt SAE/ Metric Professional Tool Sets

Drive Size: 1/4 in; 3/8 in

SKU	Includes	Quantity
181-CTK150	(2) Ratchets; (3) Extensions; (51) Standard Sockets Spark Plug Socket; (12) Combination Wrenches; (24) hex Keys; (2) Pliers Adjustable Wrench; (2) Screwdrivers Magnetic Bit Driver; (38) Bits; Bit Adapter; (12) Nutdriver Bits	150 pc
181-CTK180	(2) Ratchets; (3) Extensions Adapter; (51) Standard Sockets; (31) Deep Sockets Spark Plug Socket; (12) Combination Wrenches; (24) Hex Keys; (2) Pliers Adjustable Wrench; (4) Screwdrivers Magnetic Bit Driver; (46) Bits; Bit Adapter	180 pc



70 Pc 1/4 in and 3/8 in Drive Mechanics Tool Sets

Quantity: 70 Pc
 Drive Size: 1/4 in; 3/8 in

SKU	Includes
181-CTK70C	(2) Ratchets; (2) Extensions Adapters; (32) Socket Bit Driver and Bits; (8) Hex Keys; (12) Combination Wrenches



PB™ Penetrating Catalysts

SKU	Capacity Vol.
108-26-PB	18 oz



Starting Fluids

Applications: Help Start Gasoline and Diesel Engines

SKU	Container Size
108-16-SF	11 oz



Surface Shield® Rust Protectants

Applicable Materials: Metal Surfaces, Equipment and Moving Parts
 Applications: Corrosion Protectant

SKU	Capacity Vol.
108-16-SS	12 oz



ALLWIK® Pillows

Absorption: 28 gal

SKU	Length	Width
655-AW1818	18 in	18 in



SPC® Economy Portable Spill Kits

Absorption: 5 gal

Includes: (10) 15 in x 19 in Pads; (2) SOCs; 3 in x 4 ft; Nitrile Gloves; (1) Disposal Bag; Instruction Sheet

SKU	Width	Length
655-SKA-PP	16 in	20 in



MRO Plus™ Absorbents

Width: 15 in

SKU	Length	Absorption
655-MRO15P	150 ft	24 gal
655-MRO100	19 in	26 gal



Adjustable Wrenches

Head Angle: 15°

Handle Type: I-Beam

Material: Chrome Vanadium Steel

Finish: Chrome

SKU	Opening Size	Overall Length	Head Width	Head Thickness
140-808W-BULK	1-11/32 in	8 in	2-23/64 in	17/32 in
140-810W-BULK	1-3/8 in	10 in	2-51/64 in	5/8 in
140-812W-BULK	1-1/2 in	12 in	3-17/64 in	3/4 in



Code Blue® WideAzz® Adjustable Wrenches

Head Angle: 15°

Head Thickness: 1/2 in

Handle Type: Cushion Grip

Material: Chrome Vanadium Steel

Finish: Chrome

SKU	Opening Size	Overall Length
140-8WCB-BULK	1.54 in	8 in



Snap Ring Pliers

Tip Type: Replaceable

Material: Alloy Steel

SKU	Overall Length	External Ring Fit	Jaw Length	Includes
140-926	6-1/4 in	1/8 in - 1 in	1-1/2 in	INTERCHANGEABLE tip kit includes: .023, .039, .047 straight and .039, .047, 90-degree
140-927	8 in	1/4 in - 2 in	1.600 in	INTERCHANGEABLE TIP KIT includes: .039, .047, .074 straight and .039, .047 90-degree



Snap Ring Pliers Set

Includes: 926, 927, 929 Retaining Pliers

Material: Alloy Steel

Length: 6-1/4 in; 8 in; 10 in

Wt.: 1.88 lb

SKU	Tip Size	Opening Size
140-RT-3	0.023 in - 0.120 in	1/8 in - 4 in



3.5 gal Industrial Concrete Open Head Sprayers

Operating Pressure: 40 to 60 psi

Extension Type: Brass Wand

Hose Length: 48 in

Pump Type: Piston with Chemical-Resistant Seals and Gaskets

Nozzle Type: Brass Fan-Tip

Includes: Tank; Brass Wand; Reinforced Hose

Wt.: 11 lb

SKU	Capacity Vol.	Extension Length
139-1949	3-1/2 gal	24 in



Premier Pro Tri-Poxy® Steel Sprayers

Operating Pressure: 40 psi to 60 psi

Extension Type: Curved Brass Wand

Hose Length: 42 in

Nozzle Type: Adjustable Brass

SKU	Capacity Vol.	Extension Length	Includes
139-1280	2 gal	12 in	12-in Brass Extension Wand with Adjustable Spray Nozzle; 42 in Reinforced Hose; In-Tank Filter; Poly Shut-Off Valve
139-1380	3 gal	18 in	18-in Brass Extension Wand with Adjustable Spray Nozzle; 42 in Reinforced Hose; In-Tank Filter; Zinc with Brass Coating Shut-Off Valve



Premier Pro XP Poly Sprayers

Operating Pressure: 40 psi to 60 psi

Hose Length: 42 in; Reinforced

Nozzle Type: Adjustable Brass

Includes: Brass Extension Wand; Hose; SureSpray™ Anti-clog Filter

SKU	Capacity Vol.	Extension Length
139-21220XP	2 gal	12 in
139-21230XP	3 gal	18 in



ProSeries™ XP Poly Sprayers

Operating Pressure: 40 to 60 psi
Hose Length: 48 in
Handle Type: Comfort Grip
Nozzle Type: Adjustable Brass
Includes: 48 in Hose; 20 in Poly Wand
Extension Length: 20 in

SKU	Capacity Vol.
139-26021XP	2 gal
139-26031XP	3 gal



Plastic Steel® Putty (A) Kits

Specific Gravity: 2.8
Hardness: 85 Shore D
Full Cure Time @ Temp.: 7 days @ 75° F

SKU	Temp. Range
230-10110	Dry 250° F; Wet 120° F



20V MAX* Cordless Combo Kits

Torque: 300 in-lb
Speed: 2800 RPM
Includes: (1) DCD771 20V MAX* 1/2" Drill/Driver; (1) DCF885 1/4" Impact Driver; (2) 20V MAX* Lithium Ion 1.3 Ah Battery Packs; (1) 20V MAX* Charger; (1) Contractor Bag

SKU
115-DCK240C2



20V MAX* Cordless Impact Wrenches with Hog Ring Anvil

Batt. Type: Lithium-Ion
Torque: 250 ft-lb

SKU	Drive Size	Speed
115-DCF911B	1/2 in	2800 RPM
115-DCF913B	3/8 in	2850 RPM



20V MAX* Lithium Ion Grinder

Speed: 8,000 RPM
Length: 14 in
Includes: (1) DCG412; (1) Hex Wrench; (1) Type 27 Grinding Guard; (1) 2-Position Side Handle; (1) 5 in x 1/4 in T27 Metal Grinding Wheel
Wt.: 4.07 lb

SKU	Voltage	Spindle Thread
115-DCG412B	20V	5/8 in to 11



20V MAX* Lithium Ion Grinder Tool Kits

Batt. Cap.: 5 Ah
Speed: 7,000 RPM
Includes: DCG412 Grinder; (2) DCB205 20V MAX* XR Premium Li-Ion Battery; Fast Charger; Spanner Wrench; 5 inch Type 27 Grinding Guard; 2-Position Side Handle; Contractor Bag

SKU
115-DCG412P2



20V MAX* XR® 3-Speed Impact 1/4 in Drivers

Cycle Rate: 4200 IPM
Includes: (1) DCF845 20V MAX* XR® 1/4 in 3-Speed Impact Driver; (2) DCB205 20V MAX* 5.0 Ah Batteries; (1) Belt Hook; (1) Charger; (1) Kit Bag

SKU	Torque	Length
115-DCF845P2	1825 in-lb	5-1/10 in



20V MAX* XR® Brushless 4-Tool Combo Kits with POWERSTACK™ Battery

Includes: (1) DCD805 20V MAX* XR® Brushless 1/2 in. Hammer Drill/Driver; (1) DCF887 20V MAX* XR® 1/4 in. Impact Driver; (2) Belt Clips; (1) DCS382 20V MAX* Brushless Reciprocating Saw; (1) DCL040 20V MAX* LED Work Light; (1) DCB115 Charger; (1) DCB205 20V MAX* 5.0Ah Lithium Ion Battery; (1) DCBP034 20V MAX* DEWALT POWERSTACK™ Compact Battery; (1) Contractor Bag

SKU	Torque	Speed
115-DCK449E1P1	1825 in lb	3250 RPM



20V MAX* XR® High Torque Impact Wrenches with Quick Release Chuck (Bare)

Speed: 1900 RPM
Torque: 500 ft-lb

SKU	Drive Size
115-DCF898B	7/16 in



20V MAX* XR® Mid-Range Impact Wrenches with Detent Pin Anvil

Speed: 2000 RPM
Torque: 800 ft-lb



ATOMIC™ 20V MAX* Brushless 4-Tool Combo Kits

Torque: 1700 in-lb
Includes: (1) Drill; (1) Impact Driver; (1) Oscillating Multi-Tool; (1) One-Handed Reciprocating Saw; (2) Battery; (1) Charger; (1) Contractor Bag



FLEXVOLT® 60V MAX* Cordless Grinders with Kickback Brake

Spindle Thread: 5/8 in-11
Speed: 9,000 RPM

SKU	Drive Size
115-DCF892B	1/2 in

SKU
115-DCK486D2

SKU	Includes
115-DCG418X1	(1) DCG418; (1) 20V/60V MAX* FLEXVOLT® 9.0 Ah Battery (DCB609); (1) Charger; (1) Side Handle; (1) 4-1/2 in Type 27 Guard; (1) 6 in Type 27 Guard; (1) Wrench; (2) Flanges; (1) Kit Bag
115-DCG418B	(1) DCG418; (1) Wrench; (2) Flanges; (1) Side Handle; (1) 4-1/2 in Type 27 Guard; (1) 6 in Type 27 Guard



60V MAX* Brushless Cordless Cut-Off Saws

SKU	Blade Diam	Arbor Diam
115-DCS692B	9 in	7/8 in



ATOMIC™ 20V MAX* Cordless Impact Wrench with Hog Ring Anvil Kits

SKU	Drive Size	Speed	Torque
115-DCF900B	1/2 in	2300 RPM	1400 ft-lbs
115-DCF921B	1/2 in	2800 RPM	450 ft-lb
115-DCF923P2	3/8 in	2500 RPM	450 ft-lb



MAX* XR® Cordless Brushless Deep Cut Band Saws

Cutting Cap.: 4 in
Length: 15 in

SKU	Batt. Cap.
115-DCS374B	5 A-h



60V MAX* Brushless Cordless Grinders KICKBACK BREAK™

Speed: 6500 RPM
Includes: Second Handle; Wrench



Cordless Reciprocating Saws

Batt. Type: 20V/60V MAX* FLEXVOLT® Series
Stroke Length: 1-1/8 in
Cycle Rate: 3000 SPM
Length: 19 in
Includes: (1) DCS389B 60V MAX* Reciprocating Saw; (1) Blade



Rechargeable LED Flashlights

Batt. Type: Lithium Ion
Lumens: 1000 Lumens
Color: Yellow
Includes: (1) DCL183 Rechargeable LED Flashlight; (1) USB charging cable

SKU	Voltage
115-DCG440B	60V

SKU	Batt. Cap.
115-DCS389B	Up to 12.0 Ah

SKU
115-DCL183



Wet/Dry Vacuums

Power Cap.: 5 Ah

Tank Material: Plastic

Cord Length: 6 ft

Includes: (1) DCV580H Wet/Dry Vacuum; (1) 5 ft Heavy-Duty Crush Resistant Hose; (1) Crevice Tool Attachment; (1) Wide Nozzle Tool Attachment; (1) Gore™ Wet/Dry HEPA Filter; Battery and Charger Sold Separately

SKU	Capacity Vol.	Air Consumption
115-DCV581H	2 gal	31 CFM



Chesapeake Rubber Boots

Height: 16 in Boot; 1/2 in Heel

SKU	Size Group
Plain Toe/Pull-On/Knee Boots; Bay-Loc Sole Pattern	
868-8677500.06	6
868-8677500.07	7
868-8677500.08	8
868-8677500.09	9
868-8677500.10	10
868-8677500.11	11
868-8677500.12	12
868-8677500.13	13
Steel Toe/Pull-On/Knee Boots; Bay-Loc Sovle Pattern	
868-8677600.05	5
868-8677600.06	6
868-8677600.07	7
868-8677600.08	8
868-8677600.09	9
868-8677600.10	10
868-8677600.11	11
868-8677600.12	12
868-8677600.13	13
868-8677600.14	14
868-8677600.15	15



MetMax® Full Safety Metatarsal Boots

Material: PVC; Steel Toe

Height: 15 in

SKU	Size Group
Steel Toe/Midsole; Pull-On	
868-MZ2LE02.04	Men's 4
868-MZ2LE02.05	Men's 5
868-MZ2LE02.06	Men's 6
868-MZ2LE02.07	Men's 7
868-MZ2LE02.08	Men's 8
868-MZ2LE02.09	Men's 9
868-MZ2LE02.10	Men's 10
868-MZ2LE02.11	Men's 11
868-MZ2LE02.12	Men's 12
868-MZ2LE02.13	Men's 13
868-MZ2LE02.14	Men's 14
868-MZ2LE02.15	Men's 15



Purofort® Thermo+ Rubber Boots

Material: Polyurethane; Purofort®; Steel

Height: 16 in Boot; 1/2 in Hel

SKU	Size Group
868-E662843.06	Men's 6
868-E662843.07	Men's 7
868-E662843.08	Men's 8
868-E662843.09	Men's 9
868-E662843.10	Men's 10
868-E662843.11	Men's 11
868-E662843.13	Men's 13
868-E662843.14	Men's 14
868-E662843.15	Men's 15



Safety Barricade Tapes

Width: 3 in | **Material:** Plastic

SKU	Depicted Text	Color	Length	Thickness
272-77-0201	Caution	Yellow	200 ft	2 mil
272-71-1001	Caution	Yellow	1,000 ft	2 mil
272-76-0604	Danger	Red	500 ft	7 mil
272-77-1004	Danger	Red	1,000 ft	4 mil



Torpedo Levels

Accuracy: 0.001

No. of Vials: 3

Vial Positions: (1) 45°; (1) Level; (1) Plumb

Base Type: Grooved; Magnetic

Structure: I-Beam

Width: 1.6 in

Height: 0.6 in

SKU	Length
272-581-9	9 in



True Blue® Combination Squares

Graduation(s): 16ths, 32nds

No. of Scales: 1

Increment @ Scale: 1/16 in @ 1 in

Material: Steel

Wt.: 1/2 lb

SKU	Blade Length	Blade Width
272-e250	12 in	1 in



Ball Pein Hammers

Overall Length: 13.5 in

Handle Material: Steel

SKU	Head Weight
268-E3-24BP	24 oz



Estwing Drilling Hammers

Material: Steel

SKU	Overall Length	Head Weight
268-B3-4LBL	16 in	4 lb



HTGP Bright Jobber Drill and Plug Hand Tap Sets

Material: High Speed Steel

SKU	Includes
890-330083	Drill Sizes: #36, #29, #25, #21, #7, F, 5/16, U, 27/64 in; Tap Sizes: #6-32 NC, #8-32 NC, #10-24 NC, #10-32 NF, 1/4 in-20 NC, 5/16 in-18 NC, 3/8 in-16 NC, 7/16 in-14 NC, 1/2 in-13NC; Metal Index Case



Falcon™+ Self-Retracting Lifelines

Load Capacity: 310 lb

No. of Legs: 1

SKU
493-MFS-OGC1-02/20FT



Framing Hammers

Material: Steel

SKU	Head Weight	Overall Length
268-E3-28SM	28 oz	16 in



Tinner's Hammers

Material: Steel

SKU	Head Weight	Overall Length
268-T3-18	18 oz	12.5 in



CoreShield™ A4/D Coated Cut Resistant Gloves

Size Group: 9/Large

SKU
582-24-0513B/9L



CoreShield™ A5/E Coated Cut Resistant Gloves

Size Group: 8/Medium

SKU
582-25-0913B/8M



H500 Industry Standard Full-Body Harnesses

Load Cap.: 420 lb

Size Group: Universal (L/XL)

Fastening Method: Mating Chest Buckles; Tongue Leg Buckles

SKU	Connection Type	Style	Material
493-H5IS311102	Back/Front D-Rings	IS3 Variant; No Padding; Vest	Steel Hardware
493-H5ISP111002	Back D-Ring	IS6P Variant; Shoulder Pads; Vest	Nylon/EVA Foam Shoulder Pads; Steel Hardware



H700 Full Body Harnesses

Material: Anodized Aluminum; Anodized Black Aluminum; Plated Black Brass; Stainless Steel

Size Group: Universal

Load Cap.: 420 lb

SKU	Connection Type	Fastening Method	Style
493-H7IC3A2	Back/Front/Side D-Rings	QC Chest/Leg Buckles	Industry Comfort (IC)
493-H7CC2A2	Back/Side D-Rings	QC Chest Buckle; Tongue Leg Buckles	Construction Comfort (CC)



Turbolite™+ Fall Limiters

Load Capacity: 420 lb
Bottom Connector: Locking Snap Hook
No. of Legs: 1

SKU
493-MTL-OHW1-01/11FT
493-MTL-OHW1-01/6FT



Turbolite™+ Scorpion Fall Limiters

Load Capacity: 420 lb
Bottom Connector: Locking Snap Hook
No. of Legs: 1

SKU	Top Connector
493-MTL-OHS1-11/9FT	Locking Snap Hook
493-MTL-OHS1-01/9FT	Carabiner



5500 Series Low Maintenance Half Mask Respirators

Body Material: Elastomeric
Resistance: Biohazard; Chemical; Gas; Particulates; Vapor

SKU	Size Group
068-550030M	Medium
068-550030L	Large



7700 Series Half Mask Respirators

Body Material: Silicone
Resistance: Particulates; Chemical; Contamination; Gas

SKU	Size Group
068-770030M	Medium
068-770030L	Large



Chemical Resistant Butyl™ Gloves

Coating: Cement-Dipped Butyl™ Rubber
Style: Smooth Grip; Unsupported
Cuff Style: Rolled Bead
Lining: Unlined

SKU	Size Group
068-B131/8	8
068-B131/9	9



NorthFlex Red™ NF11 Foam PVC Fingers/Palm Coated Gloves

Cuff Style: Knit-Wrist
Material: Nylon; Seamless Knit
Lining: Nylon

SKU	Size Group
068-NF11/8M	Medium
068-NF11/9L	Large



Avatar™ Plus OTG Safety Glasses

Lens Tint: Amber
Lens Material: Polycarbonate
Lens Coating/Shade: HydroShield® Anti-Fog (AF)

SKU
068-AS01AMHS



Hypershock™ Safety Eyewear

Lens Material: Polycarbonate
Lens Coating/Shade: HydroShield™ AF

SKU	Lens Tint
763-S2940HS	Clear
763-S2941HS	Gray



Protégé Eyewear

Lens Material: Polycarbonate
Lens Coating/Shade: HydroShield™ Anti-Fog
Resistance: Fog

SKU	Lens Tint
763-S4201HS	Gray
763-S4200HS	Clear



Calibration Gas

Dia.: 3-1/8 in

Temp Range: -

Includes: 4 Gas Methane, Oxygen, Hydrogen Sulfide, Carbon Monoxide, Balance N2, Aluminum Cylinder

SKU	Used With
126-CG-Q34-4	REG-DF-1; REG-0.5



Clip Single-Gas Detectors

Gas Type: Carbon Monoxide

Temp. Range: -40° F - 122° F

Sound Level: 95 dBA

Display Type: LCD

Power Source: Lithium Battery

Run Time: 2 Years

SKU	Includes	Sensor Type
126-BWC2-M50200	Specified Sensor; Stainless Steel Alligator Clip; Concussion-Proof Housing; Test Cap; Instructions	Surecell™



MicroClip Multi-Gas Detectors

Sensor Type: Electrochemical Cell

Gas Type: LEL; Oxygen; Carbon Monoxide; Hydrogen Sulfide

Temp. Range: -4° F - 122° F

Sound Level: 95 dBA

Display Type: LED

Power Source: Lithium-ion Battery

Run Time: 18 h

SKU	Includes
126-MCXL-XWHM-Y-NA	Specified Sensor(s); Stainless Steel Alligator Clip; Concussion-Proof Housing; Rechargeable battery; Wall Outlet Charging Adaptor; Calibration/Test Cap and Hose; Manual; Multi-language CD



BRITE-MARK® 40 Threaded Cap/Barrel Permanent Paint Markers

Tip Size: Medium; Felt #38

Tip Type: Bullet

SKU	Color
253-40008	White



BRITE-MARK® Medium Permanent Paint Markers

Tip Size: Medium; Felt #15

Tip Type: Bullet

SKU	Color
253-84005	Orange



Cross-Check™ Torque Seal® Tamper-Proof Indicator Paste

Temp. Range: -20° F - 400° F

Color: Orange

Full Cure Time @ Temp.: 1 to 2 h

Wt.: 0.2 lb

SKU	Capacity
253-83314	0.05 lb



High Temp Markers

Tip Size: Medium; Fiber #38

Tip Type: Threaded Cap

Temp Range: - 2,000° F

SKU	Color
253-44250	Black



TKX® All-Purpose Penetrant Lubricants and Protectants

Flash Point: 163 °F

Chemical Compound: Petroleum Distillates

SKU	Capacity Vol.
428-02016	11 oz



Hand Cleaner Towels

Odor/Scent: Citrus

Quantity: 72/Container

SKU	W x L Per Sheet
253-42272	10 in x 12 in



MEDAPHENE® Plus Disinfecting Wipes

SKU	Odor/Scent	Capacity Vol.
253-96365	Citrus	1 lb 5 oz



F10 PETG Economy Faceshields

Used With: Jackson Safety Headgear
 Lens Coating/Shade: Uncoated
 Thickness: 0.040 in

SKU	Type	Binding	Height
138-28962	Shape D	Bound	9 in
138-29104	Shape E	Unbound	8 in



SC-6 Hard Hats

Adjusting Method: Ratchet
 Material: HDPE Blended Plastic
 Suspension: 4-Point Ratchet
 Size Group: 6-1/2 to 8

SKU	Color
138-14833	Yellow
138-14838	Blue
138-14839	Orange
138-14841	Red
138-14842	Gray



SG Series Safety Glasses

Diopter Strength: 0
 Lens Material: Polycarbonate

SKU	Lens Tint	Lens Coating/Shade	Resistance
138-50007	Smoke Mirror	Sta-Clear™ Anti-Fog	Fog
138-50010	IR 5.0	Hardcoat Anti-Scratch	Scratch
138-50000	Clear	Hardcoat Anti-Scratch	Scratch
138-50006	Smoke Mirror	Hardcoat Anti-Scratch	Scratch
138-50004	Indoor/Outdoor	Hardcoat Anti-Scratch	Scratch



400 Series C-Clamps

Spindle Dia: 3/4 in
 Material: Steel

SKU	Opening Size	Throat Depth	Pressure
825-14242	4-1/4 in	3-1/4 in	6,200 lb
825-14256	6-1/16 in	4-1/8 in	6,600 lb
825-14270	8-1/4 in	5 in	6,900 lb



Regular Duty F-Clamps

Load Cap.: 1,800 lb
 Bar Width: 1 in
 Bar Thickness: 15/32 in
 Spindle Diam: 3/4 in
 Body Material: Forged Steel; Extruded Steel
 Body Finish: Zinc Plated
 Handle Material: Steel

SKU	Opening Size	Throat Depth
825-86200	8 in	4-3/4 in
825-86210	12 in	5-1/2 in
825-86220	18 in	4-3/4 in



Tradesman Vises

Jaw Material: Steel
 Material: Cast Iron
 Finish: Powder Coated

SKU	Base Type	Jaw Width	Jaw Opening	Throat Depth	Pipe Jaw Cap.
825-28805	360° Swivel	4-1/2 in	3-1/2 in	3-1/2 in	1/4 in - 2-1/2 in
825-28806	360° Swivel	5-1/2 in	5 in	3-3/4 in	1/4 in - 3 in
825-28807	Swivel	6-1/2 in	6 in	4 in	1/4 in - 3-1/2 in



20 in 3-Drawer Machinists' Top Chests

Width: 20-1/8 in
Depth: 8-1/8 in
Height: 13-5/8 in
Material: 20 ga Steel Body; 22 ga Steel Drawers
Wt.: 25 lb

SKU	Capacity Vol.	No. of Drawers
444-620B	1800 cu in	3



5-Drawer Maintenance Pro™ Industrial Tool Carts

Length: 20 in
Width: 39 in
Height: 43 in
Capacity Vol.: 19052 in³

SKU	Color
444-395MPCGY	Grey
444-395MPCR	Red
444-395MPCBK	Black
444-395MPCBL	Industrial Blue



All Purpose Waterless Hand Cleaners

Capacity Vol.: 14 oz

SKU
407-105



Cooling Fan for Hard Hats

Material: PC;ABS; TPE

SKU
409-60155



Hard Hat Chin Straps

Material: Nylon

SKU	Suspension
409-KHHSTRP	Clips



Hard Hat Replacement Top Pads

Material: Polyester

SKU	Suspension
409-KHHTOPPAD	Hook-and-Loop



Hard Hats

Adjusting Method: Ratchet with Pivot
Material: PC/ABS
Suspension: 4-point
Size Group: 6.5 in to 8 in

SKU
409-60401
409-60105
409-60406RL
409-60407RL



Premium KARBN™ Pattern Full Brim Hard Hats

Adjusting Method: Ratchet with Pivot
Material: PC/ABS; Polyester Shell Lining
Size Group: 6.5 in to 8 in

SKU	Suspension
409-60347	4-point



Line-Up® Pavement Striping Paints

SKU	Capacity Vol.	Color
425-K00830108	20 oz	Highway Yellow



Line-Up® Striping Machines

SKU
425-K08340



EL™ 848 FLASH FREE® Electrical Degreasers

Removes: Dirt; Grease; Oil; Wax

SKU	Capacity Vol.
425-SC0848000	13 oz
425-SC0848T00	17 oz



Rust Breaker® Penetrant

Temp. Range: -20° F - 550° F

SKU	Capacity Vol.
425-SC0103000	10 oz



CD™ 888 Glass Cleaners

Removes: Grease; Grime; Smoke

SKU	Capacity Vol.
425-SC0888000	18 oz



General Purpose Cleaners

Removes: Grease; Fingerprints

SKU	Capacity Vol.
425-SC0880000	19 oz



SP000 Series RTV Silicone Sealants

Temp. Range: 80° F - 450° F
Capacity Vol.: 8 oz

SKU	Color
425-S00010000	Clear
425-S00040000	Black
425-S00050000	Red



Electric Motor Safety Solvent & Degreasers

Removes: Grease; Oil; Wax

SKU	Capacity Vol.
425-S00703000	20 oz



LU™ 100 White Lithium Greases

Temp. Range: -20° F - 275° F

SKU	Capacity Vol.
425-SC0100000	16 oz



Cool Gel® Heat Barrier Sprays

SKU	Capacity Vol.
434-11509	32 oz
434-11513	16 oz



Quik Stik® + Oily Surface Solid Paint Markers

Temp. Range: -50° F - 150° F

SKU	Color
434-28880	White
434-28881	Yellow



Excaltur® 7028 Stick Electrodes

Material: Mild Steel

SKU
897-ED032636



Innershield® NR®-232 MIG Wires

Material: Carbon Steel

SKU
897-ED012523
897-ED012522
897-ED012518



Excaltur® 7018 MR® Stick Electrodes

Material: Low Hydrogen Mild Steel

Length: 14 in

Type: SMAW

SKU
897-ED032588
897-ED032589
897-ED032590
897-ED028280
897-ED028281
897-ED028282
897-ED028283



Fleetweld® 5P+ Stick Electrodes

Material: Cellulosic Mild Steel

SKU
897-ED032565
897-ED032564



Innershield® NR®-305 MIG Wires

Material: Carbon Steel

SKU	Dia.
897-ED012593	3/32 in



Excaltur® 7018-1 MR® Stick Electrodes

SKU	Material
897-ED028704	Mild Steel
897-ED028702	Low Hydrogen Mild Steel



Innershield® NR®-211-MP MIG Wires

Material: Carbon Steel

SKU	Dia.
897-ED016354	0.035 in
897-ED012508	5/64 in



Innershield® NR®-311 MIG Wires

Material: Carbon Steel

SKU	Dia.
897-ED012632	7/64 in
897-ED012629	3/32 in



Lincolnweld® L-61® Welding Electrodes

Material: Mild Steel Steel



Pipeliner® 6P+ Stick Electrodes

Material: Mild Steel



Shield-Arc® HYP+ Stick Electrodes

Material: Low Alloy

SKU	Dia.
897-ED011807	1/8 in
897-ED011815	3/32 in
897-ED011821	5/32 in
897-ED011825	5/64 in

SKU
897-ED030848

SKU
897-ED029509
897-ED029513



Lincolnweld® LA-71 Welding Electrodes

Material: Mild Steel Steel



Pipeliner® 7P+ Stick Electrodes

Material: Low Alloy Steel



SuperArc® L-50® MIG Wires

Tensile Strength: 50000 psi (345 MPa)
Material: Copper Coated Mild Steel

SKU	Dia.
897-ED011051	1/8 in
897-ED011052	3/32 in

SKU
897-ED031612
897-ED031613

SKU	Dia.
897-ED031408	0.035 in
897-ED032925	0.045 in
897-ED021268	0.035 in
897-ED021270	0.045 in
897-ED021269	0.035 in
897-ED021271	0.045 in
897-ED021273	0.052 in



Lincolnweld® LA-75 Welding Electrodes

Material: Low Alloy Solid



Pipeliner® 8P+ Stick Electrodes

Material: Low Alloy Steel



SuperArc® L-59® MIG Wires

Material: Copper Coated Mild Steel

SKU	Dia.
897-ED011064	3/32 in
897-ED011065	5/32 in

SKU
897-ED030827
897-ED030826
897-ED030828

SKU	Dia.
897-ED032366	0.035 in
897-ED032367	0.045 in
897-ED032368	0.052 in
897-ED032814	0.052 in



SuperArc® LA-100™ MIG Wires

Dia.: 0.045 in
Tensile Strength: 690 MPa (100 ksi)

SKU	Material
897-ED031417	Copper Coated Low Alloy



SuperArc® LA-90™ MIG Wires

Material: Copper Coated Low Alloy
Tensile Strength: 550 to 620 MPa (80 to 90 ksi)

SKU	Dia.
897-ED031413	0.035 in
897-ED031414	0.045 in



SuperArc® L-56® MIG Wires

Material: Copper Coated Mild Steel
Tensile Strength: 380 to 485 MPa (55 to 70 ksi)

SKU	Dia.
897-ED023334	0.030 in
897-ED032926	0.030 in
897-ED031411	0.035 in
897-ED032927	0.035 in
897-ED021274	0.035 in
897-ED025945	0.035 in
897-ED021275	0.035 in
897-ED031412	0.045 in
897-ED032928	0.045 in
897-ED025946	0.045 in
897-ED021276	0.045 in
897-ED021277	0.045 in
897-ED021278	0.052 in
897-ED021279	0.052 in



Luminator® Leather Palm Gloves

Cuff Style: Rubberized Safety
Material: Fabric; Grain Pigskin Leather

SKU	Size Group
127-19261S	Small
127-19261M	Medium
127-19261L	Large
127-19261XL	X-Large



Ninja® Ice HPT® Fully Coated Insulated Work Gloves

Cuff Style: Knit-Wrist
Material: Acrylic; HPT®; Nylon

SKU	Size Group
127-N9690FCM	Medium
127-N9690FCL	Large
127-N9690FCXL	X-Large
127-N9690FCXXL	2X-Large



Ninja® Ice HPT® Palm/Fingertip Coated Insulated Work Gloves

Cuff Style: Knit-Wrist
Material: Acrylic; HPT®; Nylon

SKU	Size Group
127-N9690S	Small
127-N9690M	Medium
127-N9690L	Large
127-N9690XL	X-Large
127-N9690XXL	XX-Large



2-Position Convertible Hand Trucks

Height: 46 in; Upright 61 in
Wt.: 42 lb
Material: Engineered Polymer Hub; Poly Casters; Rubber Wheels; Steel

SKU	Load Cap.	Wheel Diam
310-47180	800 lb	10 in



Fastback™ Compact Folding Utility Knives

Blade Length: 1 in
Blade Style: Folding Utility
Blade Material: Bi-Metal

SKU	Handle Length	Overall Length
495-48-22-1500	4 in	6.15 in



Rhino 6000+ Label Printer Kits

Includes: Dymo Rhino 6000 Industrial Label Printer; 1 in Black on White Flexible Nylon Label Cartridge; 3/8 in Black on White Vinyl Label Cartridge; Durable/Hard Carry Case; Li-ion Rechargeable Battery Pack; AC Adapter; USB Cable; Link to Download RHINO CONNECT Software

SKU
784-2122499



Heat-Shrink Tubes

Material: Polyolefin

SKU	Length	Width
784-18053	5 ft	3/8 in
784-18055	5 ft	1/2 in



Industrial Rhino™ Flexible Nylon Label Cartridges

Material: Flexible Nylon

SKU	Length	Width
784-18489	11.5 ft	3/4 in
784-18488	11.5 ft	1/2 in



Industrial Rhino™ Vinyl Label Cartridges

Material: Vinyl

SKU	Length	Width
784-18443	18 ft	3/8 in
784-18444	18 ft	1/2 in
784-18445	18 ft	3/4 in



Rhino™ 5200 Advanced Labeling Tools

Includes:IND Vinyl Label Cartridge, Black on White, 3/4 in W x 18 ft L; Hard Case; Quick Start Guide; Li-Ion Rechargeable Battery Pack and AC Adapter; Rhino™ Industrial 5200 Label Maker; User Manual CD-ROM

SKU
784-1756589



Short Brim Hard Hats

Adjusting Method: Dual-Locking Mechanism

Material: High-Density Polyethylene (HDPE)

Size Group: 6-1/2 in to 7-7/8 in

SKU	Color
068-NSB20001	White
068-NSB21001	White
068-NSB20002	Yellow
068-NSB21002	Yellow



Thread Sealants with PTFE

Temp. Range: -65° F - 300° F

SKU	Capacity
230-80632	4 oz
230-80633	16 oz



Ultra Silicone RTV Gasket Makers

Capacity Vol: 3.35 oz

SKU	Color
230-81724	Blue
230-82180	Black



MaxiFlex® Ultimate™ Nitrile Coated Micro-Foam Grip Gloves

Material: Nitrile; Nylon with Lycra®

SKU	Size Group
112-34-874/S	Small
112-34-874/M	Medium
112-34-874/L	Large
112-34-874/XL	X-Large
112-34-874/XXL	2X-Large



Traverse™ Industrial Climbing Helmets

Material: ABS/ Polycarbonate

Suspension: HDPE

SKU	Color	Style
112-280-HP1491RVM-15	Red	Vented
112-280-HP1491RVM-11	Black	Vented
112-280-HP1491RVM-01	White	Vented
112-280-HP1491RVM-02	Yellow	Vented
112-280-HP1491RVM-44	Hi-Vis Yellow	Vented
112-280-HP1491RM-15	Red	Non-Vented
112-280-HP1491RM-11	Black	Non-Vented
112-280-HP1491RM-01	White	Non-Vented
112-280-HP1491RM-02	Yellow	Non-Vented
112-280-HP1491RM-44	Hi-Vis Yellow	Non-Vented



Commercial Liquid Fabric Softeners

SKU	Capacity Vol.
608-14121	140 oz



Commercial POWER-PODS® Laundry Detergents

SKU	Capacity Vol.
608-14117	63 Tabs



Polyurethane Triple Expanding Foam
Temp. Range: 55° F - 90° F

SKU	Capacity
630-0909	12 oz
630-0912	20 oz



Commercial Liquid Laundry Detergents

SKU	Capacity Vol.
608-14116	105 oz
608-14119	170 oz



100% Silicone Architectural Grade RTV Sealants

Temp. Range: -60° F - 400° F
Full Cure Time @ Temp.: 24 h @ 77° F

SKU	Capacity	Color
630-0820	2.8 fl oz	Clear
630-0826/01	9.8 fl oz	Clear
630-0816/51	9.8 fl oz	Gray



RD PRO® Heat Resistant RTV Sealants

Temp. Range: -60° F - 500° F
Full Cure Time @ Temp.: 24 h @ 77° F

SKU	Capacity
630-0809/01	10.3 oz



Commercial Powder Laundry Detergents

SKU	Capacity Vol.
608-14120	197 oz



ERGO EZ GRIP™ 7-in-1 Multi-Purpose Painter's Tools

Material: Steel; Tungsten Carbide, Plastic
Blade Type: Stiff

SKU	Blade Width	Overall Length
630-6251	3 in	9 in



Heavy-Duty Straight Pipe Wrenches

Material: Cast Iron, Steele

SKU	Pipe Cap.	Overall Length
632-31000	3/4 in	6 in
632-31005	1 in	8 in
632-31010	1-1/2 in	10 in
632-31015	2 in	12 in
632-31020	2 in	14 in
632-31025	2-1/2 in	18 in
632-31030	3 in	24 in
632-31035	5 in	36 in



Industrial Choice 1600 System Multi-Purpose Enamel Sprays

Application Temp. Range: 50° F - 100° F

SKU	Capacity Vol.	Color
647-1653830V	12 oz	OSHA Safety Orange



Painter's Touch® 2X Ultra Cover® Gloss Spray Paints + Primers

SKU	Capacity Vol.	Color
647-334026	12 oz	Gloss Black
647-334034	12 oz	Hunter Green



FL 227 BR Code™ Scannable Paper Tapes

Thickness: 5.8 mil
Color: Blue

SKU	Width	Length
689-105635	1.88 in	10.5 ft



Overall® Economical Fast-Drying Enamel Spray Paints

Application Temp. Range: 50° F - 100° F
Dry Heat Resistance: 200° F

SKU	Capacity Vol.	Color
647-V2402830V	16 oz	Black



Gemini® RightCut™ Right Angle Cut-Off Wheels

SKU	Dia.	Speed
547-66252842027	4-1/2 in	13,580 RPM
547-66252842025	4-1/2 in	13590 RPM
547-66252830587	6 in	10185 RPM



PC 627 BR Code™ Scannable Duct Tapes

Thickness: 10 mil
Color: White

SKU	Width	Length
689-105643	1.88 in	10.5 ft



Painter's Touch Ultra Cover 2x Sprays

SKU	Capacity Vol.	Color
647-334020	12 oz	Flat Black



Gemini® Type 18R Snagging Plugs

SKU	Dia.	Speed
547-61463622220	2 in	18145 RPM



PSL BR Code™ Scannable Labels

Thickness: 3 mil
Length: 10.5 ft

SKU	Color
689-105637	Blue
689-105638	Green
689-105639	Orange



PXL BR Code™ Scannable Labels

Thickness: 4.1 mil
Color: Yellow

SKU	Width	Length
689-105640	1.88 in	10.5 ft



Professional Pistol-Grip Tape Dispensers

SKU	Frame Material	Handle Material
689-SD-934	Metal	Polycarbonate



Crystal Simple Green® Industrial Cleaners and Degreasers

Removes: Grease; Grime; Dirt; Dust; Oil

SKU	Capacity Vol.
676-0610001219024	24 oz
676-0610000619128	1 gal
676-0600000119005	5 gal
676-0600000119055	55 gal



Fast Pack® Drink Mixes

Package Yield: 6 oz

SKU	Flavor
690-159015300	Mixed Berry
690-159015301	Cherry
690-159015302	Grape
690-159015304	Orange
690-159015305	Fruit Punch
690-159015306	Tea
690-159015309	Tropical Cooler
690-159015310	Cool Citrus



Qwik Stik® ZERO Sugar

Package Yield: 20 oz

SKU	Flavor
690-159060100	ZERO Sugar Orange
690-159060101	ZERO Sugar Mixed Berry
690-159060102	ZERO Sugar Fruit Punch
690-159060103	ZERO Sugar Lemonade
690-159060106	ZERO Sugar Lemon-Lime
690-159060099	ZERO Sugar Strawberry Lemonade



Liquid Concentrates

Package Yield: 5 Gal
Capacity Vol.: 64 oz

SKU	Flavor
690-159030319	Strawberry Lemonade
690-159030320	Mixed Berry
690-159030321	Cherry
690-159030322	Grape
690-159030323	Lemonade
690-159030324	Orange
690-159030325	Fruit Punch
690-159030328	Lemon-Lime
690-159030329	Tropical Cooler
690-159030330	Cool Citrus



Ready-To-Drink

Capacity Vol.: 20 oz

SKU	Flavor
690-159030530	Mixed Berry
690-159030532	Grape
690-159030534	Orange
690-159030535	Fruit Punch
690-159030536	Strawberry Lemonade



Powder Packs

SKU	Package Yield	Flavor
690-159016041	2.5 gal	Orange
690-159016042	2.5 gal	Fruit Punch
690-159016043	2.5 gal	Lemon-Lime
690-159016046	2.5 gal	Grape
690-159016048	2.5 gal	Mixed Berry
690-159016400	5 gal	Mixed Berry
690-159016401	5 gal	Cherry
690-159016402	5 gal	Cool Citrus
690-159016403	5 gal	Lemonade
690-159016404	5 gal	Orange
690-159016405	5 gal	Fruit Punch
690-159016406	5 gal	Grape
690-159016408	5 gal	Lemon-Lime
690-159016409	5 gal	Tropical Cooler



ZERO Liquid Concentrates

Capacity Vol.: 64 oz
Package Yield: 5 Gal

SKU	Flavor
690-159050102	Fruit Punch
690-159050103	Grape
690-159050104	Lemon-Lime
690-159050106	Mixed Berry
690-159050107	Orange



ZERO Ready-To-Drink

Capacity Vol.: 20 oz

SKU	Flavor
690-159030800	Fruit Punch
690-159030801	Sugar-Free Orange
690-159030803	Sugar-Grape
690-159030804	Mixed Berry



Adjustable Wrenches

Head Angle: 15°

Material: Chrome Vanadium Steel

SKU	Opening Size	Overall Length
586-2078606	1 in	6 in
586-2078608	1-1/8 in	8 in
586-2078610	1-1/4 in	10 in



Fast Release™ Locking Pliers Sets

Includes: 8, 10, 12 in Groovelocks; 10 in Adjustable Wrench; 8 in Long Nose Pliers; 8 in Linesman Pliers; 6 in Diagonal Cutter Pliers; 6 in Slip Joint Pliers; Pouch

SKU	Finish
586-2078712	Injection molded



Folding Lockback Utility Knives

Blade Length: 2-3/8 in

Blade Style: Folding

Blade Material: Stainless Steel

Includes: (3) Irwin Safety Blades

SKU	Handle Length	Overall Length
586-2089100	5-3/4 in	5-3/4 in



Self-Retracting Safety Knives

Blade Length: 2-3/8 in

Blade Style: Self-Retracting

Blade Material: Bi-Metal

Includes: (1) Irwin Blue Blade™

SKU	Handle Length	Overall Length
586-2088600	6 in	6 in



Bent Nose Pliers

Overall Length: 12 in

Material: Chrome Vanadium Steel

SKU
586-2078612



Fast Release™ Curved Jaw Locking Pliers with Wire Cutter

Material: Metal; Blade Steel

SKU	Overall Length
586-1873303	8 in



Gold® Power Arc Curved Reciprocating Saw Blades

Thickness: 0.035 in

Material: Bi-Metal

SKU	Length	Width	Teeth Per Inch
433-210999118GR	9 in	1 in	18
433-210989114GR	9 in	1 in	14



1991® Regular-Duty Utility Blades

No. of Cutting Edges: 1

Material: Carbon Steel

SKU
680-11-911
680-11-911A



Classic 99® Retractable Utility Knives

Blade Length: 2-7/16 in
Blade Style: Retractable
Blade Material: Carbon Alloy Steel
Includes: (3) 11-921 1992® Heavy-Duty Blades

SKU	Overall Length
680-10-099	6 in



Long Tapes

End Type: Retractable Hook
Return Motion: Power

SKU	Blade Length	Blade Width
680-34-106	100 ft	3/8 in



Single-Edge Razor Blades

No. of Cutting Edges: 1

SKU	Blade Shape	Blade Tip Shape
680-11-515	Rectangular	Single Edge



Combination Squares

Graduation(s): 1/8 in x 1/16
Material: Steel
Measuring System: Inch

SKU	Blade Length	Blade Width
680-46-123	12 in	1 in



Quick Point™ Knives

Blade Length: 9 mm
Blade Style: Snap-Off
Blade Material: Steel
Includes: Pocket Clip

SKU	Handle Length	Overall Length
680-10-150	5 -1/8 in	7 in



Tape Rules

End Type: 3-Rivet Hook

SKU	Blade Length	Blade Width	Return Motion
680-30-454	25 ft	1 in	Automatic
680-30-455	25 ft	1 in	Automatic
680-30-464	30 ft	1 in	Automatic
680-30-485	12 ft	1/2 in	Automatic
680-30-495	16 ft	3/4 in	Spring



Interlock® Retractable Utility Knives

Blade Length: 2-7/16 in
Blade Style: Retractable
Blade Material: Carbon Steel
Includes: (3) 11-921 1992® Heavy-Duty Blades

SKU	Overall Length
680-10-079	5-7/8 in



Rubber Grip Hacksaws

Type: Hack Saw
Throat Depth: 4-3/8 in
Handle Material: Steel; Rubber

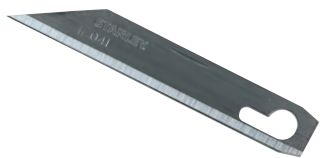
SKU	Blade Length	Teeth Per Inch
680-STHT20139L	12 in	24



Torpedo Magnetic Levels

No. of Vials: 3
Body Material: Cast Aluminum
Width: 3.9 in

SKU	Length
680-42-465	9 in



Utility Pocket Knife Blades

No. of Cutting Edges: 1

SKU	Blade Shape	Blade Tip Shape
680-11-041	Rectangular	Pointed



Stinger® LED Rechargeable Flashlights

Lumens: High - 425; Medium - 200; Low - 100
Modes: High; Medium; Low; Strobe
Run Time: High - 3 hr; Medium - 5.5 hr; Low - 10 hr; Strobe - 7.5 hr
Std. Pack: 1EA/EA
UOM: EA

SKU	Includes	Lamp Life	Price
683-75713	AC/DC Steady Charger;(2) Holders	50,000 h	\$180.51



Fold-A-Jack® Style Lo Jacks

Height: 21 in - 36 in
Material: Steel
Std. Pack: 1EA/EA
UOM: EA

SKU	Load Cap.	Pipe Diam.	Price
432-781310	2500 lb	1/8 in - 24 in	\$110.49



Enduro® Pro HAZ-LO® Headlamps

Lumens: Spot 160 Lumens; Flood 160 Lumens; Spot/Flood 235 Lumens
Modes: Spot; Flood; Spot/Flood Combo
Includes: (3) AAA Alkaline Batteries; Elastic Headstrap; Rubber Hard Hat Strap; 3M® Dual Lock for Strapless Mounting to Hard Hats

SKU	Run Time	Lamp Life
683-61424	5 hr	50,000 h



Waypoint® Flashlights

Lumens: 1,000 lm - High; 550 lm - Medium; 35 lm - Low
Modes: High; Low; Strobe
Run Time: 3.75 h - High; 7.5 h - Medium; 87 h - Low
Includes: Built-in Rechargeable Battery; 120V AC Charging Cord; Wrist Lanyard; Holder

SKU	Lamp Life
683-44910	50,000 h



Heavy-Duty Style Hi Jacks

Height: 28 in - 49 in
Material: Carbon Steel

SKU	Load Cap.	Pipe Diam.
432-780375	2500 lb	1/8 in - 36 in



ProTac® 2AA Flashlights

Lumens: High - 250; Low - 18
Modes: High; Low; Strobe
Run Time: High - 2 hr; Low - 43 hr; Strobe - 4 hr

SKU	Includes	Lamp Life
683-88033	(2) Batteries; Nylon Holster	50,000 h



Fold-A-Jack® Style Hi Jacks

Height: 28 in - 49 in
Material: Carbon Steel

SKU	Load Cap.	Pipe Diam.
432-781300	2500 lb	1/8 in - 24 in
432-781301	2000 lb	1-1/4 in - 24 in



Heavy-Duty Style Lo Jack Stands

Height: 21 in - 36 in
Material: Steel

SKU	Load Cap.	Pipe Diam.
432-780385	2500 lb	1/8 in - 36 in

TRUE TEMPER



Toughstrike Fiberglass Engineer Hammers

Grip Style: Comfort Grip
Material: Fiberglass

SKU	Head Weight	Handle Length
027-20184200	3 lb	15 in



Precision Pens

SKU	Std. Pack
780-490736	6EA/CA
780-490733	48EA/CA



Specialist® Degreaser and Cleaner EZ-Pods

SKU	Capacity Vol.
780-300882	5 Count
780-300899	20 Count

WEILER



Acid/Flux Brushes

Trim Length: 3/4 in
Bristle Material: Black Horsehair
Handle Material: Tin Ferrule

SKU	Brush Width	Thickness
804-44090	1/2 in	1/4 in



Economy Chip and Oil Brushes

Bristle Material: White China Bristle
Handle Material: Wood

SKU	Brush Width	Thickness	Trim Length
804-40066	1 in	5/16 in	1-1/2 in
804-40068	2 in	5/16 in	1-1/2 in
804-40070	3 in	3/8 in	1-1/2 in
804-40071	4 in	5/8 in	1-5/8 in



Roughneck® Max Stringer Bead Wheels

Dia.: 4 in
No. of Knots: 32

SKU	Bristle Material	Bristle Diam
804-13131	Steel	0.020 in

WEILER



Small Hand Scratch Brushes

Bristle Material: Stainless Steel
Overall Length: 7-1/2 in
Bristle Rows: 3 X 7

SKU	Handle Material	Block Material
804-44167	Wood	Wood
804-44075	Plastic	Plastic



Tiger® Big Cat® High Density Flap Discs

Abrasive Material: Zirconia Alumina
Dia: 4-1/2 in

SKU	Grit
804-50803	40
804-50809	60



Tiger® Disc Angled Style Flap Discs

Abrasive Material: Zirconium
Tool Shape: Type 29

SKU	Dia.	Grit
804-50519	4-1/2 in	60



Vortec Pro® Abrasive Flap Discs

Abrasive Material: Zirconium
Tool Shape: Type 29

SKU	Dia.	Grit
804-31351	4-1/2 in	60



Wolverine® Cut-Off Wheels

Thickness: 0.045 in
Arbor Size: 7/8 in
Grit: 60
Speed: 13300 RPM



Barbed Hose Nipples

Connection Type: B-Size Connection Nipple
Pressure: 200 psig
Hose I.D.: 1/4 in



Hose Nuts

Connection Type: Female
Pressure: 200 psig
Size: B-Size

SKU	Tool Shape	Dia.
804-56281	Type 1	4-1/2 in

SKU	Size
312-17	B-Size

SKU	Gas Type	Thread Direction
312-7	Oxygen	RH
312-8	Acetylene/Fuel Gas	LH



**CONSTRUCTION
 INDUSTRIAL
 JANITORIAL
 WELDING
 ENERGY
 SAFETY**



BEST WELDS®

ANCHOR BRAND



BLINE®

GREAT VALUE, PERFORMANCE & RELIABILITY AT A GREAT PRICE

MANUFACTURER INDEX

3m™ 8-10	Dykem® 19	Lincoln Electric 23-25	Simple Green® 29
AlphaTec 11	Dymo® 25-26	LPS® 19	Sprayon 22
Anchor 2-3	Empire 16	Markal® 23	Sqwincher® 29-30
Ansell 11	Estwing 16-17	MCR Safety 25	Stanley® 30-32
Anthony® 11	Greenfield Industries 17	Milwaukee® 25	Streamlight 32
Best Welds 4-6	Honeywell® 17-19	Milwaukee Hand Trucks 25	Sumner® 32
B'laster® 12	HyFlex® 11	Norton® 28	Tide 27
Brady 12-13	Irwin Tools® 30	Permatex 26	True Temper 33
Channellock 13	Jackson® 20	PIP 26	WD-40 33
Chapin™ 13-14	Jobox® 12	Red Devil® 27	Weiler 33-34
Crescent 12	Joe's Hand Cleaner® 21	Ridgid 27	Western 34
Devcon 14	Kennedy 21	Rust-Oleum 28	Wilton 20
DeWalt® 14-16	Klein Tools® 21	Scrubs® 19-20	
Downy 27	Krylon 21-22	Scotch™ 10	
Duck Pro 28-29	LACO 22	Scotch Brite 10	
Dunlop® 16	Lenox® 30	Shurtape 29	



(209) 646-9755

customerservice@allinsupplyco.com

3157 Humphrey Court, Turlock, CA 95380

OCTOBER - NOVEMBER - DECEMBER
Q4 2024

SKU:
126-BWC2-H

Clip Single-Gas Detectors



Gas Type: Hydrogen Sulfide
Temp. Range: -40° F - 122° F
Sound Level: 95 dBA
Display Type: LCD
Sensor Type: Surecell™
Power Source: Lithium Battery
Run Time: 2 Years
Alarm Setting: Low 10 ppm; High 15 ppm
Includes: Specified Sensor; Stainless Steel Alligator Clip; Concussion-Proof Housing; Test Cap

Honeywell
THE POWER OF CONNECTED

Ratchet Tie-Down Straps

SKU:
130-05519

Length: 15 ft
Width: 1-3/4 in
End Type: Double-J Hooks
Load Cap.: 1,666 lb
Break Strength: 5,000 lb

KEEPER



Wolverine® Grinding Wheels



Thickness: 1/4 in
Dia.: 4-1/2 in
Tool Shape: Type 27
Grit: 24
Speed: 13300 RPM

WEILER

SKU	Arbor Size
804-56454	5/8 in
804-56464	7/8 in

SKU:
434-96270

Starter Lead Pro Holders



MARKAL

Includes: Built in Sharpener
Used With: Markal Pro Refills
Material: Metal
Length: 6.125 in
Width: 0.5 in
Height: 1 in
Wt.: 0.12 lb

Advantage® 3200 Full-Facepiece Respirator

SKU:
454-10028995

Body Material: Silicone
Size Group: Medium
Includes: Respirator

MSA
The Safety Company

